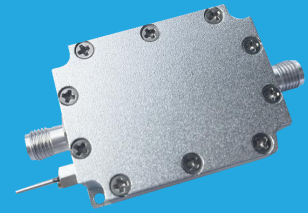


## QLA-600-4200-30-08

600~4200MHz, 30dB, 0.8dB

- |   |  |
|---|--|
| <b>Features:</b><br>* Small Size<br>* Low Power Consumption | <b>Applications:</b><br>* Wireless<br>* Transmitter<br>* Laboratory Test |
|---|--|



### Electrical

Frequency:	600~4200MHz
Gain:	30dB min.
Gain Flatness:	±2.5dB typ. @0.6~3GHz ±2.5dB typ. @3~4.2GHz
Noise Figure:	0.8dB typ.
Output Power (P1dB):	21dBm typ.
Input VSWR:	2.0 typ.
Output VSWR:	2.0 typ.
Voltage:	+5V DC
Impedance:	50Ω

### Absolute Maximum Ratings

RF Input Power:	+22dBm
Voltage:	+7V

### Mechanical

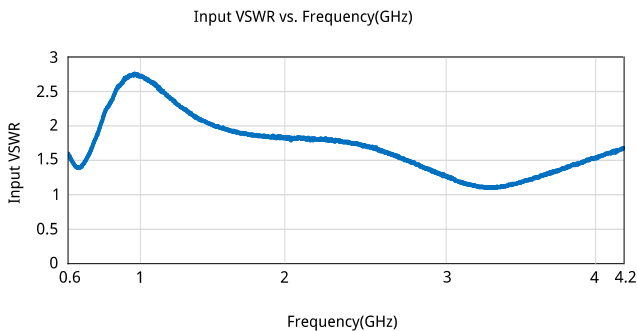
Size*1:	40*30*15mm 1.575*1.181*0.591in
RF Connectors:	SMA female
Power Supply Connectors:	Feed Through/Terminal Post

[1] Exclude connectors.

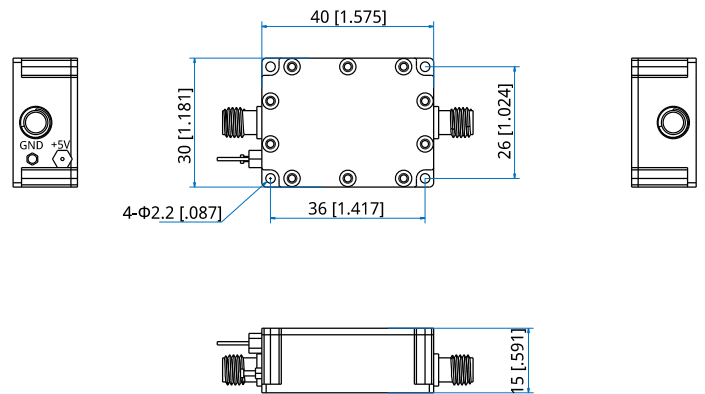
### Environmental

Operating Temperature:	-40~+85°C
Non-operating Temperature:	-55~+150°C

### Typical Performance Curves



### Outline Drawings

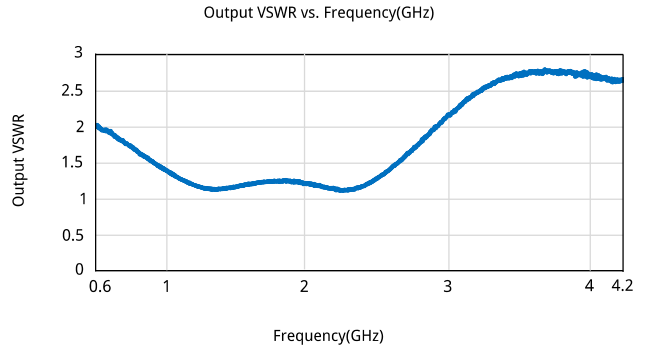


Unit: mm [in]  
Tolerance: ±0.2mm [±0.008in]

### How To Order

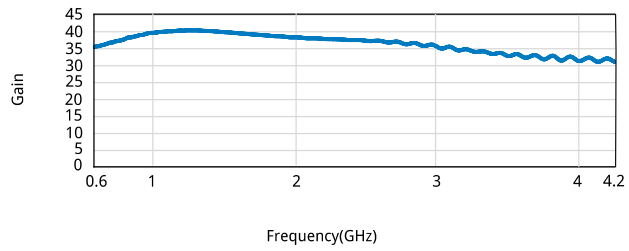
**QLA-600-4200-30-08**

Customization is available upon request.



## Low Noise Amplifier

Gain vs. Frequency(GHz)



Noise Figure(dB) vs. Frequency(GHz)

